



PRODUCT CLASS

Type C

T12 DIAMOND / THIMBLE SPLICE

12 strand rope hand made spliced

T12 DIAMOND

CORE : Polyester HT
COVER : Absent

CORE : POLYESTER HT



Abrasion



COVER TECH MIX : ABSENT

FIBER CHARACTERISTICS

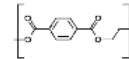
The fiber's components of this product are : **POLIESTERE HT**

- **Polyester** it's polymers produced by mixing ethylene glycol and terephthalic acid.



| FIBER'S PROPERTY | UDM | POLYESTER HT | - | - | - |
|---------------------|--------------------|--------------|---|---|---|
| Tenacity | gr/den | 9,3 | - | - | - |
| Specific gravity | gr/cm ³ | 1,38 | - | - | - |
| Elongation at break | % | 14,6 | - | - | - |
| Tensile modulus | gr/den | 120 | - | - | - |
| Melting point | °C | 256 | - | - | - |

CORE



POLYESTER HT

COVER

ABSENT



BRAID CHARACTERISTICS

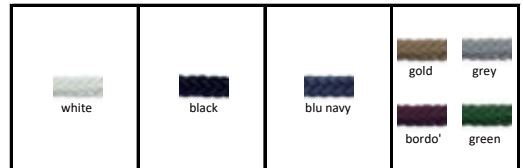
| CORE | | | COVER (it's a media of the of all fiber's components) | | |
|----------|-------------------------|--|--|---|--------------------|
| Tenacity | 9,3 gr/den | | Abrasion resistance | - | gr/den |
| Creep | 10 % | | Peack of temp. | - | °C |
| Module | 120 gr/den | | Grip | - | frict. coeff. |
| Weight | 1,38 gr/cm ³ | | Weight | - | gr/cm ³ |

DISCOUNT SYSTEM

| SHOP | | | WHOLESALE | | |
|-------------|-----|---|-------------|-----|---|
| Price x pc. | sc. | % | Price x pc. | sc. | % |
| - | - | - | - | - | - |
| - | - | - | - | - | - |

APPLICATIONS , TECHNICAL DATA , PRICE

- Mooring line with inox thimble splice



| ∅ | weight | breacking load | standard lenght | - | ∅ | white | black | blu navy | colors (on request) |
|----|--------|----------------|-----------------|---|----|----------|----------|----------|--------------------------|
| mm | gr/mt | daN | mt | - | mm | €/pz | €/pz | €/pz | €/pz |
| - | - | - | - | - | - | - | - | - | - |
| 12 | 98,0 | 1.426 | 6 | - | 12 | 55,67 € | 58,02 € | 62,15 € | 63,71 € |
| 12 | 98,0 | 1.426 | 8 | - | 12 | 60,15 € | 63,17 € | 68,47 € | 70,49 € |
| 14 | 130,0 | 1.900 | 8 | - | 14 | 71,73 € | 75,74 € | 82,77 € | 85,45 € |
| 14 | 130,0 | 1.900 | 12 | - | 14 | 83,60 € | 89,40 € | 99,56 € | 103,42 € |
| 16 | 163,0 | 2.375 | 8 | - | 16 | 82,42 € | 86,62 € | 95,01 € | 98,36 € |
| 16 | 163,0 | 2.375 | 12 | - | 16 | 96,38 € | 102,46 € | 114,57 € | 119,41 € |
| 18 | 196,0 | 2.850 | 12 | - | 18 | 118,56 € | 125,88 € | 140,43 € | 146,26 € |
| 20 | 228,0 | 3.320 | 12 | - | 20 | 136,47 € | 144,98 € | 161,91 € | 168,69 € |
| 22 | 261,0 | 3.800 | 15 | - | 22 | 154,66 € | 164,40 € | 183,78 € | 191,54 € |
| 24 | 359,0 | 5.220 | 15 | - | 24 | 209,61 € | 226,08 € | 239,21 € | 247,41 € |
| 26 | 424,0 | 6.170 | 15 | - | 26 | 234,91 € | 254,36 € | 269,87 € | 279,56 € |
| 28 | 555,0 | 8.070 | 15 | - | 28 | 294,81 € | 320,27 € | 340,57 € | 353,25 € |
| - | - | - | - | - | - | - | - | - | - |
| - | - | - | - | - | - | - | - | - | - |
| - | - | - | - | - | - | - | - | - | - |
| - | - | - | - | - | - | - | - | - | - |
| - | - | - | - | - | - | - | - | - | - |

Shock absobtion at 50% of breacking load.... 10,00%

* Linear breaking load in according to DIN EN ISO 2307