



PRODUCT CLASS

Type C

AB03 ECO TWISTER EYE SPLICE

3 strand rope hand splice

**AB03
ECO TWISTER
EYE SPLICE**

CORE : Polyester MT

COVER : Absent

CORE : POLYESTER HT



Abrasion --- POLYESTER



COVER TECH MIX : ABSENT

FIBER CHARACTERISTICS

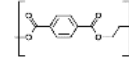
The fiber's components of this product are : **POLYESTER MT**

- **Polyestere** it's polymers produced by mixing ethylene glycol and terephthalic acid.



FIBER'S PROPERTY	UDM	POLYESTER MT	-	-	-
Tenacity	gr/den	4,0	-	-	-
Specific gravity	gr/cm3	1,38	-	-	-
Elongation at break	%	30	-	-	-
Tensile modulus	gr/den	90	-	-	-
Melting point	°C	256	-	-	-

CORE



POLYESTER MT

COVER

ABSENT



BRAID CHARACTERISTICS

CORE			COVER (it's a media of the of all fiber's components)		
Tenacity	4	gr/den	Abrasion resistance	-	gr/den
Creep	10	%	Peack of temp.	-	°C
Module	90	gr/den	Grip	-	frict. coeff.
Weight	1,38	gr/cm3	Weight	-	gr/cm3

DISCOUNT SYSTEM

SHOP			WHOLESALER		
Price x pc.	sc.	%	Price x pc.	sc.	%
-	-	-	-	-	-
-	-	-	-	-	-

APPLICATIONS , TECHNICAL DATA , PRICE

- Mooring line



white



black

∅	weight	breacking load	standard lenght	eye lenght	∅	white	black	-	-
mm	gr/mt	daN	mt	cm	mm	€/mt	€/mt	-	-
10	69,0	1.230	6	45	10	16,14 €	16,56 €	-	-
12	95,0	1.360	7	45	12	18,52 €	19,17 €	-	-
14	138,0	2.010	9	45	14	25,84 €	27,02 €	-	-
16	174,0	2.430	11	45	16	32,92 €	34,71 €	-	-
18	221,0	3.150	12	45	18	40,65 €	43,12 €	-	-
20	264,0	3.830	13	75	20	48,71 €	51,88 €	-	-
22	310,0	4.610	14	75	22	57,90 €	61,89 €	-	-
24	368,0	5.520	15	75	24	69,52 €	74,57 €	-	-
-	-	-	-	-	-	-	-	-	-
-	-	-	-	-	-	-	-	-	-
-	-	-	-	-	-	-	-	-	-
-	-	-	-	-	-	-	-	-	-
-	-	-	-	-	-	-	-	-	-
-	-	-	-	-	-	-	-	-	-
-	-	-	-	-	-	-	-	-	-
-	-	-	-	-	-	-	-	-	-
-	-	-	-	-	-	-	-	-	-
-	-	-	-	-	-	-	-	-	-

Shock absobtion at 50% of breacking load....12,00%

* Linear breaking load in according to DIN EN ISO 2307