

PRODUCT CLASS

Type A



IRIDIUM XTR-PU

COVER (Cordura / Polyester)

IRIDIUM
XTR-PU
(CRD - PET)

CORE : Iridium pre-stretch + poliurethane resin treatment
COVER : Tech mix Cordura - Polyester

CORE : IRIDIUM

(PRE-STRETCH HPT + PU RESIN TREATMENT)



COVER TECH MIX : CORDURA / POLYESTER



FIBER CHARACTERISTICS

The fiber's components of this product are : IRIDIUM , CORDURA , POLYESTER HT

- **Cordura** it's a high-tenacity woven nylon .
- **Iridium** it's an ultra high molecular weight polyethylene .
- **Polyester** it's polymers produced by mixing ethylene glycol and terephthalic acid.



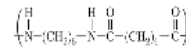
FIBER'S PROPERTY	UDM	IRIDIUM	CORDURA	POLYESTER HT	-
Tenacity	gr/den	36	9,0	9,3	-
Specific gravity	gr/cm ³	0,974	1,14	1,38	-
Elongation at break	%	3,5	23	14,6	-
Tensile modulus	gr/den	1.314	100	120	-
Melting point	°C	147	266	256	-

CORE

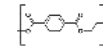


IRIDIUM

COVER



CORDURA



POLYESTER HT



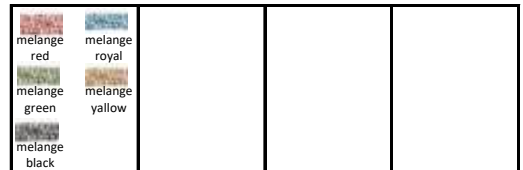
BRAID CHARACTERISTICS

CORE		COVER (it's a media of the of all fiber's components)	
Tenacity	36 gr/den	Abrasion resistance	9,2 gr/den
Creep	0,5 %	Peack of temp.	261 °C
Module	1.314 gr/den	Grip	0,14 frict. coeff.
Weight	0,974 gr/cm ³	Weight	1,26 gr/cm ³

DISCOUNT SYSTEM	
SHOP	WHOLESALE
Custom lenght sc. %	Custom lenght sc. %
Standard lenght sc. %	Standard lenght sc. %
-	-

APPLICATIONS , TECHNICAL DATA , PRICE

- Sheets & Halyards work on clutch & jammer ★★★★★
- Control lines work on winch ★★★★★
- strenght / diameter ratio ★★★★★



∅	weight	breacking load	standard lenght	custom lenght	∅	melange colors	-	-	-
mm	gr/mt	daN	mt	mt	mm	€/mt	-	-	-
1	-	-	-	-	1	-	-	-	-
1,5	-	-	-	-	1,5	-	-	-	-
2	4,6	189	200	on request (min. 20 mt)	2	0,589 €	-	-	-
2,5	5,5	297	200	on request (min. 20 mt)	2,5	0,704 €	-	-	-
3	7,3	405	200	on request (min. 20 mt)	3	1,197 €	-	-	-
3,5	8,9	675	200	on request (min. 20 mt)	3,5	1,460 €	-	-	-
4	13,0	945	200	on request (min. 20 mt)	4	1,560 €	-	-	-
5	18,5	1.215	200	on request (min. 20 mt)	5	1,850 €	-	-	-
6	25,2	2.070	200	on request (min. 20 mt)	6	2,520 €	-	-	-
7	36,9	2.700	200	on request (min. 20 mt)	7	3,690 €	-	-	-
8	48,3	3.510	200	on request (min. 20 mt)	8	4,830 €	-	-	-
9	58,2	4.230	200	on request (min. 20 mt)	9	5,820 €	-	-	-
10	68,8	5.859	200	on request (min. 20 mt)	10	7,155 €	-	-	-
12	98,0	8.487	200	on request (min. 20 mt)	12	10,192 €	-	-	-
14	131,7	10.872	100	on request (min. 20 mt)	14	12,116 €	-	-	-
16	174,7	14.400	100	on request (min. 20 mt)	16	16,072 €	-	-	-
18	205,0	18.810	100	on request (min. 20 mt)	18	18,860 €	-	-	-
20	257,0	19.800	100	on request (min. 20 mt)	20	23,644 €	-	-	-

Stretch at 30% of breacking load....2,15%
Stretch at breacking load.....3,50%

* Linear breaking load in according to DIN EN ISO 2307