

# PRODUCT CLASS

Type A



# SK78 XTR-PU

COVER ( Cordura / Polyester )

SK78 XTR-PU  
( CRD - PET )

**CORE :** Dyneema SK78 pre-stretch + poliurethane resin treatment  
**COVER :** Tech mix Cordura - Polyester

**CORE :** DYNEEMA SK78

( PRE-STRETCH HPT + PU RESIN TREATMENT )



**COVER TECH MIX :** CORDURA / POLYESTER



## FIBER CHARACTERISTICS

The fiber's components of this product are : **DYNEEMA SK78 , CORDURA , POLYESTER HT**

- **Cordura** it's a high-tenacity woven nylon .
- **Dyneema** it's an ultra high molecular weight polyethylene .
- **Polyester** it's polymers produced by mixing ethylene glycol and terephthalic acid.



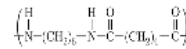
FIBER'S PROPERTY	UDM	DYNEEMA SK78	CORDURA	POLYESTER HT	-
Tenacity	gr/den	39,8	9,0	9,3	-
Specific gravity	gr/cm <sup>3</sup>	0,974	1,14	1,38	-
Elongation at break	%	3,5	23	14,6	-
Tensile modulus	gr/den	1.314	100	120	-
Melting point	°C	147	266	256	-

CORE

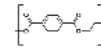


DYNEEMA 78

COVER



CORDURA



POLYESTER HT



## BRAID CHARACTERISTICS

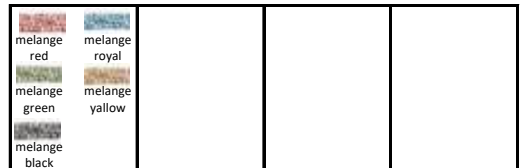
CORE			COVER ( it's a media of the of all fiber's components )		
Tenacity	39,8	gr/den	Abrasion resistance	9,2	gr/den
Creep	0,5	%	Peack of temp.	261	°C
Module	1.314	gr/den	Grip	0,14	frict. coeff.
Weight	0,974	gr/cm <sup>3</sup>	Weight	1,26	gr/cm <sup>3</sup>

## DISCOUNT SYSTEM

SHOP			WHOLESALER		
Custom lenght	sc.	%	Custom lenght	sc.	%
Standard lenght	sc.	%	Standard lenght	sc.	%
-	-	-	-	-	-

## APPLICATIONS , TECHNICAL DATA , PRICE

- Sheets & Halyards work on clutch & jammer ★★★★★
- Control lines work on winch ★★★★★
- strenght / diameter ratio ★★★★★



∅	weight	breacking load	standard lenght	custom lenght	∅	melange colors	€/mt			
mm	gr/mt	daN	mt	mt	mm					
1	-	-	-	-	1	-	-	-	-	-
1,5	-	-	-	-	1,5	-	-	-	-	-
2	4,60	210	200	on request (min. 20 mt)	2	0,736 €	-	-	-	-
2,5	5,50	330	200	on request (min. 20 mt)	2,5	0,880 €	-	-	-	-
3	7,30	450	200	on request (min. 20 mt)	3	1,497 €	-	-	-	-
3,5	8,90	750	200	on request (min. 20 mt)	3,5	1,825 €	-	-	-	-
4	13,00	1.050	200	on request (min. 20 mt)	4	1,989 €	-	-	-	-
5	18,50	1.350	200	on request (min. 20 mt)	5	2,313 €	-	-	-	-
6	25,20	2.300	200	on request (min. 20 mt)	6	3,150 €	-	-	-	-
7	36,90	3.000	200	on request (min. 20 mt)	7	4,613 €	-	-	-	-
8	48,30	3.900	200	on request (min. 20 mt)	8	6,038 €	-	-	-	-
9	58,20	4.700	200	on request (min. 20 mt)	9	7,275 €	-	-	-	-
10	68,80	6.510	200	on request (min. 20 mt)	10	8,944 €	-	-	-	-
12	98,00	9.430	200	on request (min. 20 mt)	12	12,740 €	-	-	-	-
14	131,70	12.080	100	on request (min. 20 mt)	14	15,146 €	-	-	-	-
16	174,70	16.000	100	on request (min. 20 mt)	16	20,091 €	-	-	-	-
18	205,00	20.900	100	on request (min. 20 mt)	18	23,575 €	-	-	-	-
20	257,00	22.000	100	on request (min. 20 mt)	20	29,555 €	-	-	-	-

Stretch at 30% of breacking load....2,15%  
Stretch at breacking load.....3,50%

\* Linear breaking load in according to DIN EN ISO 2307